

Centre Point Prime

PATTAYA • THAILAND

Centre Point Prime

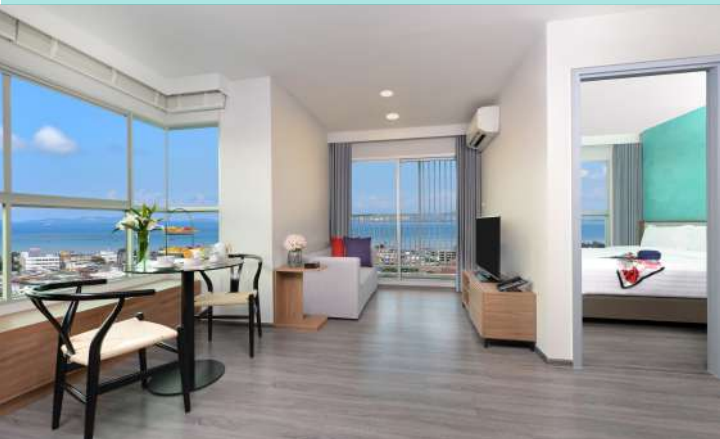


CENTRE POINT PRIME HOTEL PATTAYA

Centre Point Prime Hotel Pattaya is now open, and located on the Sukhumvit Highway at Km.142, just a few minutes before the North Pattaya junction. Superbly situated on the main road, the 33-Floor Hotel has an easy access, and offers convenient travelling to and from most attractions in Pattaya, and outer area, including Motorway, Utapao Airport, and Suvarnabhumi Airport.



The Hotel consists of 556 units equipped with international hotel-standard equipment, featuring comfortable bed, enjoyable living area with pantry, and private balcony to enhance the most memorable stay.



Room Type	Size (sq.m.)	Units
Deluxe (Sea View / City View)	28	150
Deluxe Premier (Sea View / City View)	33	369
Grand Deluxe (Sea View / City View)	38	37

Room Features :

- ◆ Free Internet Wifi ◆ Cable / Satellite Smart TV ◆ Universal & USB Plugs ◆ Safety Box ◆ Hair Dryer ◆ Complimentary Drinking Water & Coffee & Tea
- ◆ Electric Kettle ◆ Refrigerator ◆ Microwave ◆ Bathroom with Automatic Toilet Seat ◆ Private Balcony ◆ Electronic Door Lock



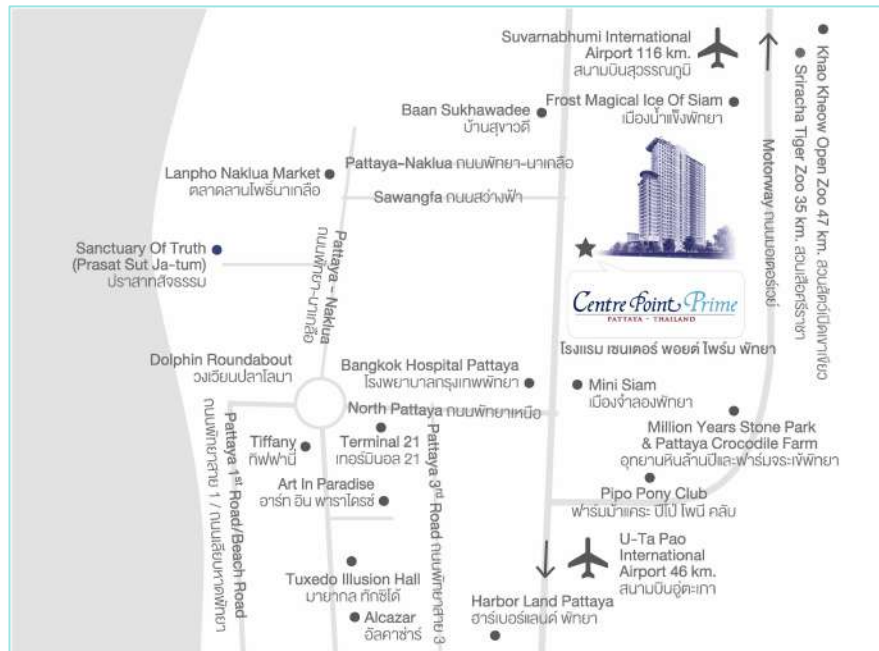
Hotel Facilities : To enrich the wonderful experience, Centre Point Prime Hotel Pattaya offers heartfelt services and stylish facilities including;

- Restaurant, and All Day Cafe
- Fascinating Garden and Sculptures for Nice Photo Shoots
- Sea View Lounge with Panoramic Views of Pattaya Beach, City and Mountains.
- Fitness, and Salted Swimming Pool with Kid's Zone & Water Play
- Children Playground, and Kids' Club for Fun Times



Meeting Facilities : The Hotel offers a fully functional multipurpose room with natural daylight and modern equipment.

Room	Dimension L x W x H (m.)	Area (sq.m.)	Theatre (Pax)	Class Room (Pax)	Round Tables (Pax)
Multipurpose Room	26 x 11 x 4.5	286	240	128	144



Map & Attractions : Easy access to all attractions

- ALCAZA - 4.7 KM.
- ART IN PARADISE - 3.8 KM.
- BAAN SUKHAWADEE - 4 KM.
- BALI HAI PIER - 9.1 KM.
- BANGKOK HOSPITAL PATTAYA - 2 KM.
- CENTRAL FESTIVAL - 6 KM.
- DOLPHIN ROUNDABOUT - 3.7 KM.
- FROST MAGICAL ICE OF SIAM - 16 KM.
- HARBOR LAND PATTAYA - 4 KM.
- KAN SHOW - 8.4 KM.
- KHAO PRATUMNAK VIEW POINT - 9 KM.
- LANPHO NAKLUA MARKET - 3 KM.
- MILLION YEARS STONE PARK & CROCODILE FARM - 7 KM.
- MINI SIAM - 1 KM.
- PATTAYA CITY SIGNAGE VIEWPOINT - 9.7 KM.
- PATTAYA NIGHT BAZAAR - 6 KM.
- PATTAYA PARK TOWER - 11 KM.
- RIPLEY'S BELIEVE IT OR NOT - 7 KM.
- RUBBER LAND - 5 KM.
- SANCTUARY OF TRUTH - 5 KM.
- TERMINAL 21 - 3.5 KM.
- TIFFANY SHOW - 4 KM.
- TUXEDO ILLUSION HALL - 4.4 KM.
- UNDER WATER WORLD - 8.1 KM.
- WALKING STREET - 8 KM.

CENTRE POINT PRIME HOTEL PATTAYA

Bangkok Office : 1522/2 Soi 50, Charoenkrung Rd., Bangrak, Bangkok 10500 , Tel: + 66 2 266 0109 Fax: + 66 2 266 0110

Pattaya Office : 275 Moo 6, Sukhumvit Rd., Naklua, Banglamung, Chonburi 20150, Tel: + 66 38 186 888 Fax: + 66 38 186 889

Email: rsvn_pattaya@centrepoin.com www.centrepoin.com/pattaya

